

SOLARIS YACHTS 55



Features

Shipyard :	Solaris Yachts	Cabins :	3 + skipper
Model :	55	Engine :	Volvo Penta D3 110CV
Year :	2018	Engine hours :	1 400
Lenght :	16.70 m • 54.79 ft	(data for guidance only)	
Wide :	4.87 m • 15.98 ft	Warranty :	Expired
Location :	Marseille (France)	Price :	904 000€ Incl. VAT

Description

This Solaris 55, in a 3-cabin layout with a crew cabin, stands out for its elegance and high-end equipment. Its dark blue hull gives it a powerful and distinctive look, perfectly paired with a full natural teak deck with refined finishes. Inside, the generous spaces and Burmese teak woodwork create a warm atmosphere, while the technical equipment — including the sail plan with an Incidence DFI mainsail, Code 0, spinnaker, DFI genoa and staysail — ensures remarkable performance. A ready-to-sail yacht that blends comfort, style and pure sailing pleasure. Option to take over the berth rental as well as a storage box (20m³).

Contact

Alpes-Maritimes Area - **LB Yachting**
8 Avenue de Verdun, 06600 Antibes
+33 4 92 90 33 95

Bouches-du-Rhône Area - **Europ Yachting**
20 Rue de la Guirlande, 13002 Marseille
+33 4 91 91 41 22

SPECIFICATIONS

Type :	Monohull Sail
Shipyard :	Solaris Yachts
Model :	55
Year :	2018
Superstructure :	Fiberglass / Polyester
Deck :	Natural teak
Colour :	Dark blue
Length :	16.70 m • 54.79 ft
Beam :	4.87 m • 15.98 ft
Draught :	2.70 m • 8.86 ft

3 cabins – 2 toilets – 2 bathrooms – 1 laundry room + skipper

Cabin :	3
Sleeping accommodation :	6
Shower room :	3
Fresh water :	450 L
Fuel :	480 L

OPTIONS LIST

Standard version

Hull and deck built in sandwich with Airex core and vacuum lamination
Interior in Burmese teak
Floors in Burmese teak
Forward-facing chart table
Main and forward bulkheads in composite
Hull structure with unidirectional longitudinal and transverse reinforcements plus carbon reinforcements
Composite chainplates
Bulkheads fully laminated to hull and deck
Cast iron keel with lead bulb (draft 2.70 m)
Fire extinguisher in engine room
Flush valves integrated into the hull
Black-water tanks for each toilet
Fixed hull windows in double-layer tempered glass
Flush deck hatches with mosquito screens and blinds
4 winches
New-generation 12V AGM batteries with separate service/start circuits
Boom light
Battery charger
LED navigation lights
Dyneema ropes with splices
Integrated hydraulic backstay adjuster
Mooring pack
Recessed track for self-tacking jib
Twin rudders

Deck and Exterior Equipment

Deck pack with extra flush panels
Swim platform with cockpit controls and integrated ladder
Tender garage with fibre floor
Bow thruster
Stern thruster
Draft 2.70 m
Extra portholes in forward cabin
Side decks, coachroof and aft platform covered in teak
Harken Performa electric winches
Retractable electric windlass
Guest cockpit bimini
Helm bimini
Coachroof sprayhood
Foldable carbon gangway
Cockpit cushions
Folding stainless-steel cleats
Port and starboard stainless-steel gates
Additional windlass control in the cockpit
Teak cockpit table with folding leaves
Additional stainless-steel handrails
Pulpits and soft lifelines
Carbon side ladder

Rigging & Handling

Black-painted aluminium mast
Rod rigging
Harken mast track
Full gennaker gear
Staysail gear with removable stay
Traditional genoa tracks
Lazy jack
Cockpit rope bags
Bamar hydraulic pack (backstay, vang, outhaul integrated)
Furlex manual jib furler

Sails

Incidence DFI mainsail (2023)
Code 0
Asymmetric spinnaker 250 m² (2021)
Staysail 50 m² (2021)
Genoa in DFI

Interiors & Comfort

Crew cabin with 2-m berth, manual toilet and sink
Additional access door to aft starboard bathroom
Fold-down saloon table
Extra poufs
Galley worktops in Corian
Bathroom basin tops in carbon
Alpes Inox stove
LG microwave 1000W, 20L
Nespresso coffee machine
Electrolux washing machine (6 kg), 1200 rpm
Safe
Saloon bookshelf
TV unit with bottle rack
Deluxe Comfort mattresses in all 3 cabins
Teak floor with grooves
Novatex grey interior upholstery with grey piping
Second set of cushion covers
Grohe galley tap
Additional drawer fridge
Additional stainless-steel fridge
Planus electric toilets
Hot/cold water system with bidet-style spray

Engine & Technical

Volvo Penta 110 HP engine
Rope cutter
Max Prop folding propeller
Fischer Panda 6.4 kW generator (200 hours)
Reversible air conditioning 40,000 BTU (220V)
Schenker watermaker 150 L/h
Galley seawater pump

Electronics & Navigation

Raymarine navigation pack (I70s, autopilot, VHF with cockpit handset)
12-inch multifunction touchscreen with built-in GPS
GPS antenna
Raymarine Quantum radar
AIS Class B transponder
Wi-Fi access point
Fusion audio system with speakers in cockpit and saloon
Extra 220V outlets
USB outlets in all cabins
Indirect LED lighting (owner's cabin and saloon)
Masthead tricolour light
Electric pump for tender

SOLARIS YACHTS 55



Helm / Steering

Carbon steering wheels, in place of the standard ones

Integrated consoles on the steering pedestals for instruments (plotter 8"), compass and different controls

Volvo Penta electronic engine control on the starboard console

Miscellaneous / Other

Fabric for deck covers, sprayhood, bimini, etc.: SUNBRELLA SILVER 5035

Tender 2.7 mt with tilting transom + 2.5 hp petrol engine

DISCLAIMER: The above data has been prepared to the best of our knowledge, but it remains non-binding and is not guaranteed. We present the details of this boat in good faith, but we cannot guarantee or warrant the accuracy of this information, nor the condition of the boat. The prospective owner should call upon their marine surveyor to examine and verify all details before transfer of ownership. This boat is offered subject to prior sale, price change, or withdrawal without notice. This document is not contractually binding.

SOLARIS YACHTS 55

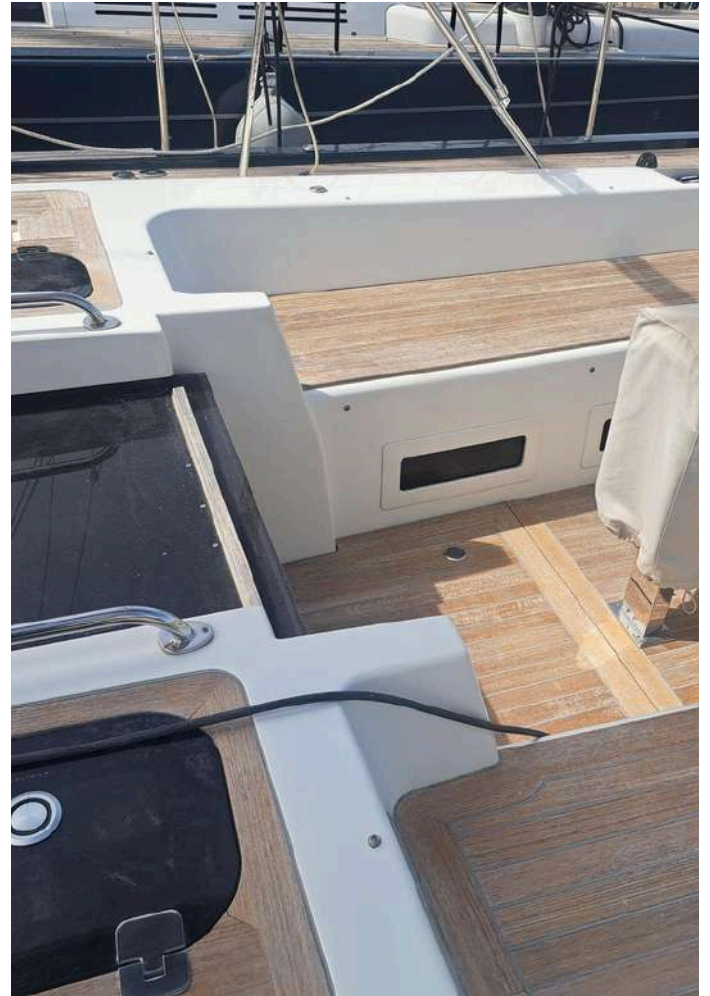
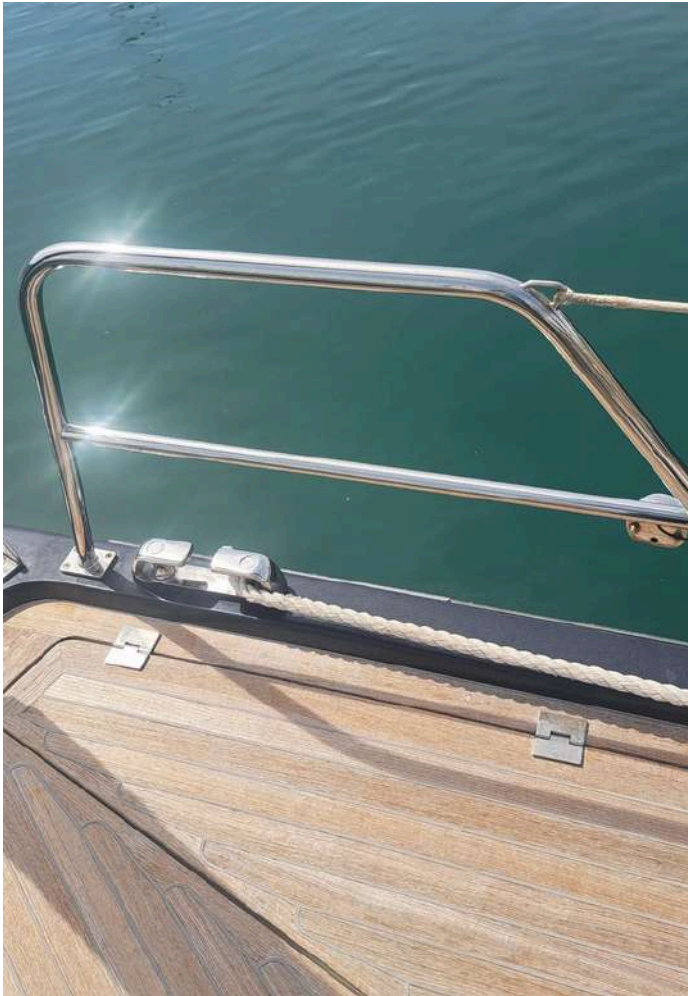


SOLARIS YACHTS 55

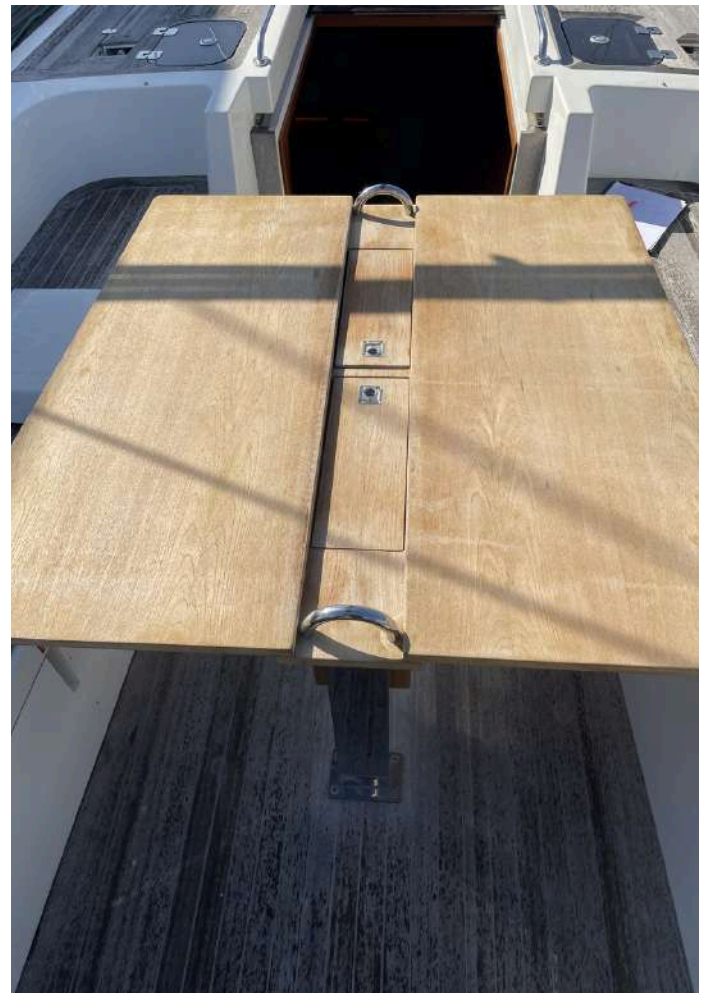
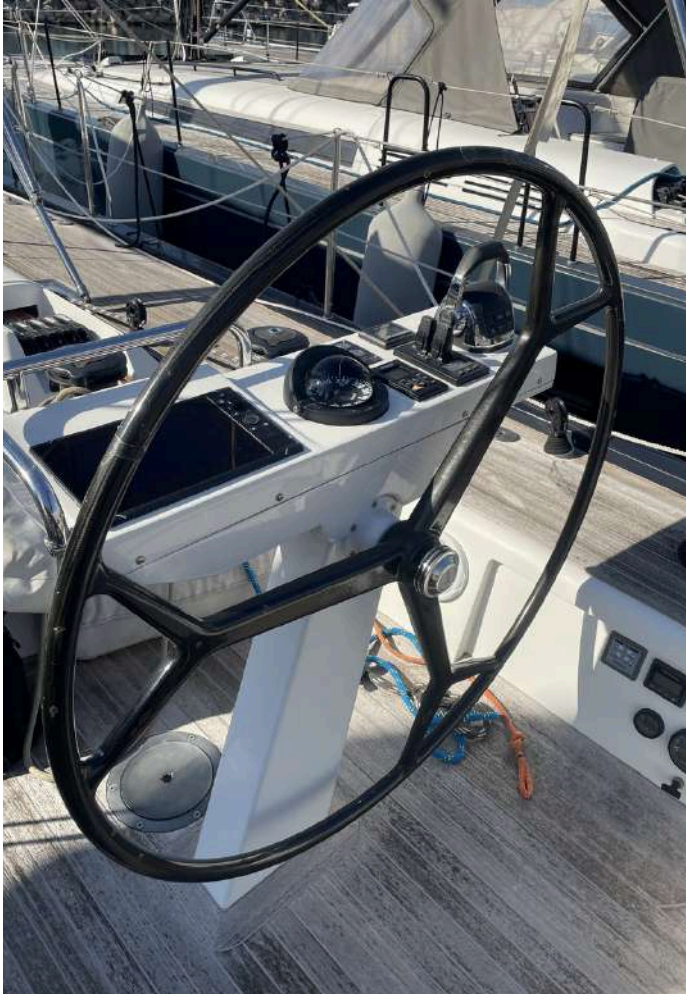


SOLARIS YACHTS 55

Teak Deck Cleaning May 2026



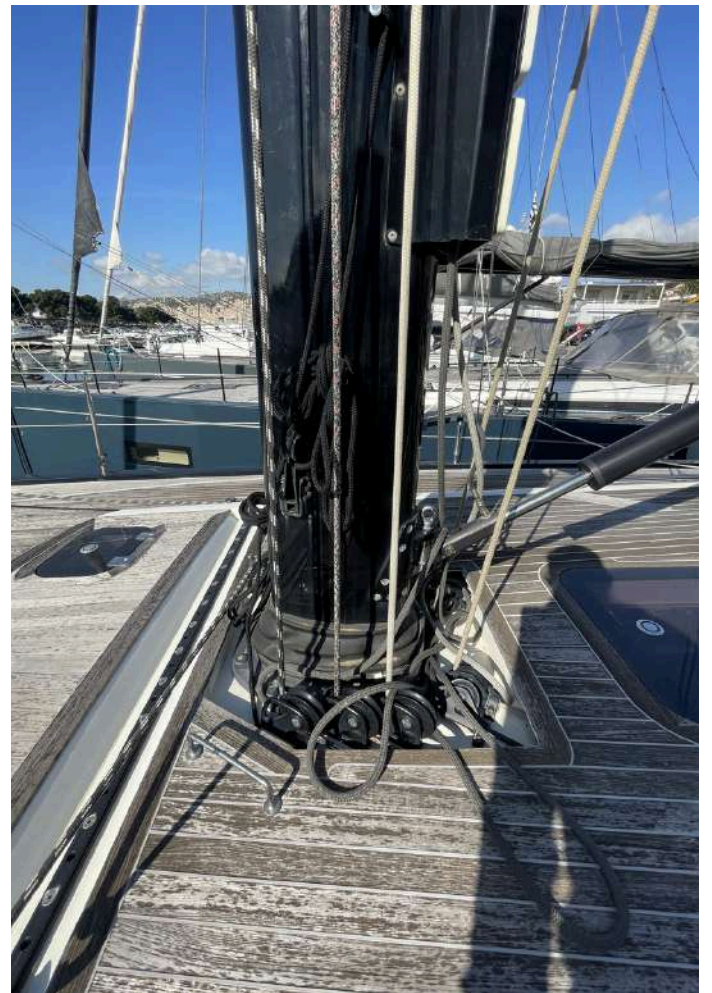
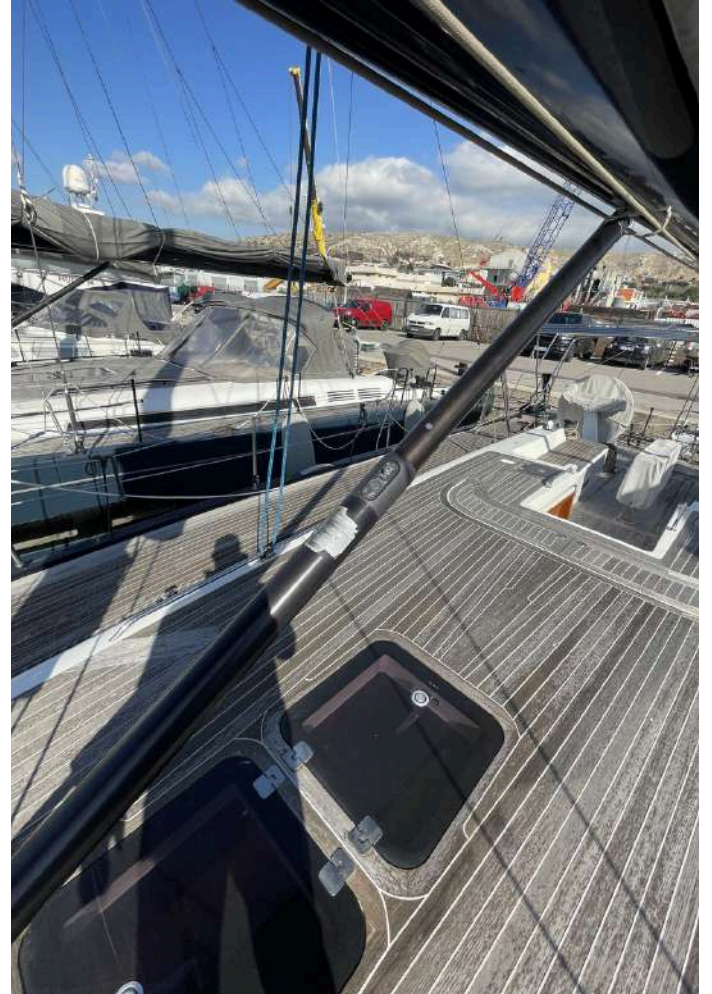
SOLARIS YACHTS 55



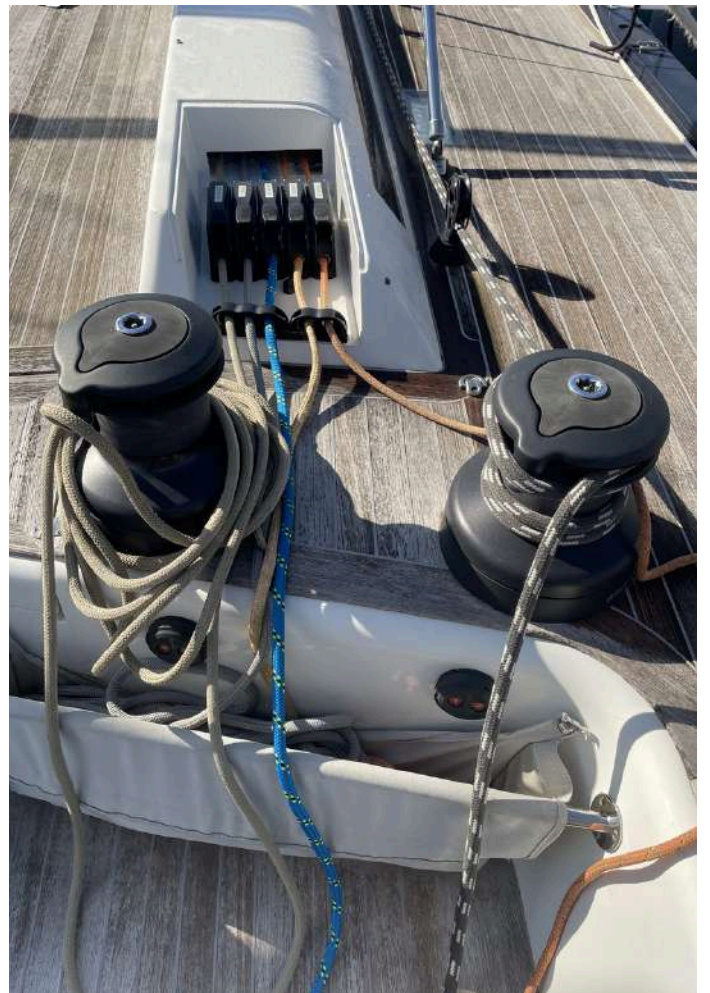
SOLARIS YACHTS 55

LB YACHTING OS

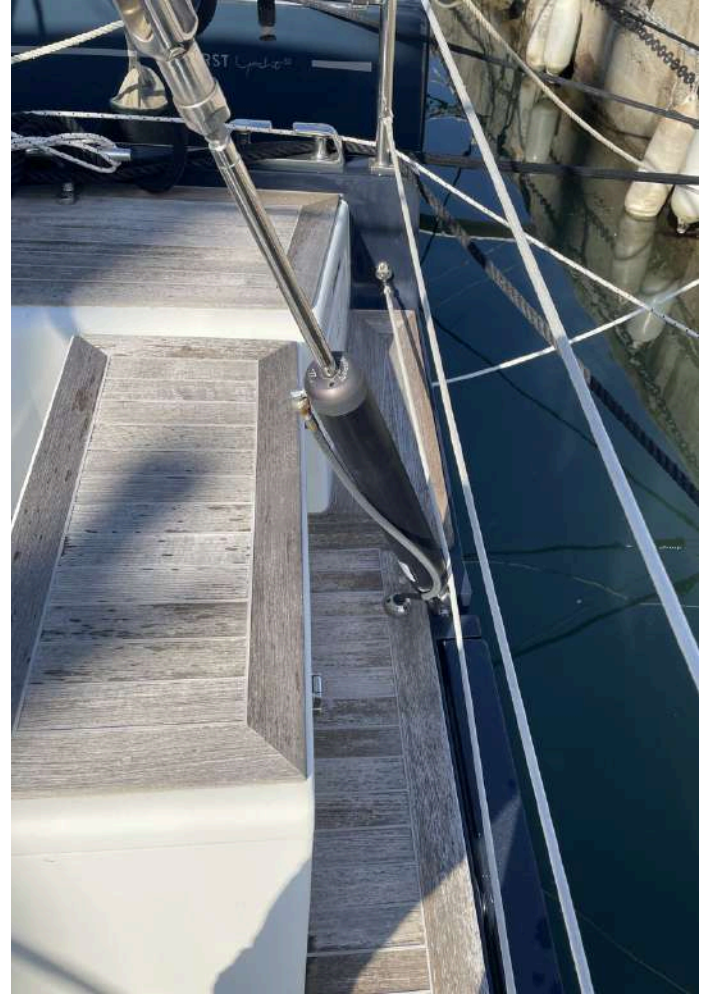
EUROPE
— YACHTING —



SOLARIS YACHTS 55



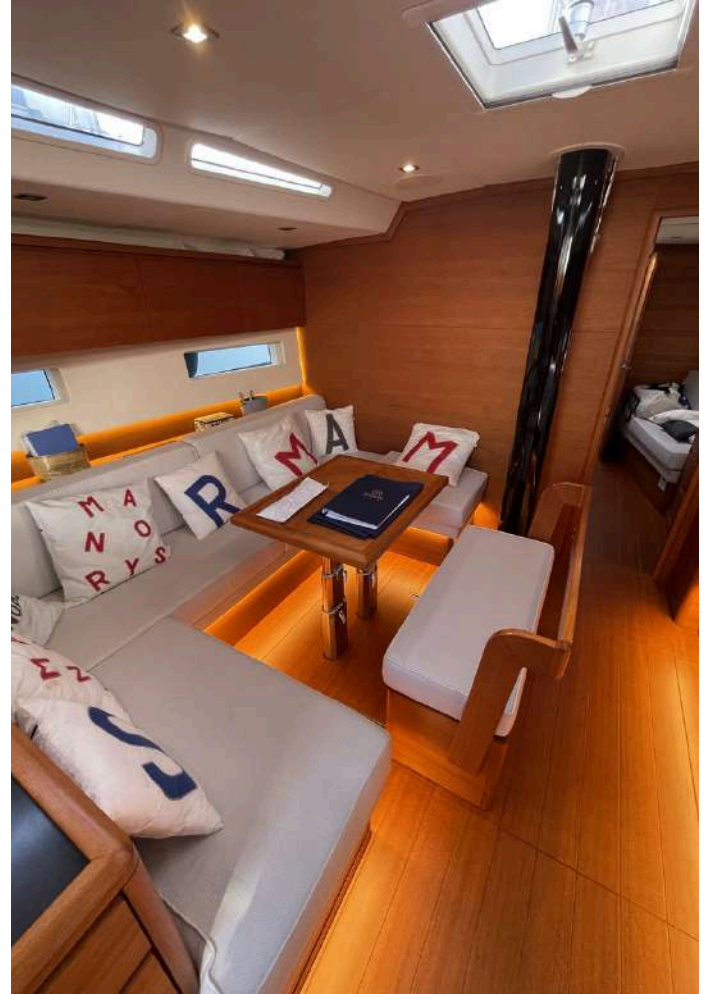
SOLARIS YACHTS 55



SOLARIS YACHTS 55



SOLARIS YACHTS 55



SOLARIS YACHTS 55



SOLARIS YACHTS 55

